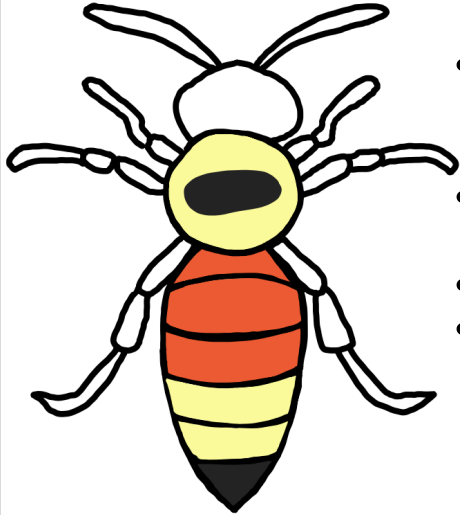


### ***Bombus rufocinctus* (Red Belted Bumble Bee)**



- Oval shaped black mark on thorax
- Red/orange hair is brighter than that found on *B. ternarius*.
- Red can be found on T1-T3
- T4 will never be red
- Seen from May-September, peaks in July

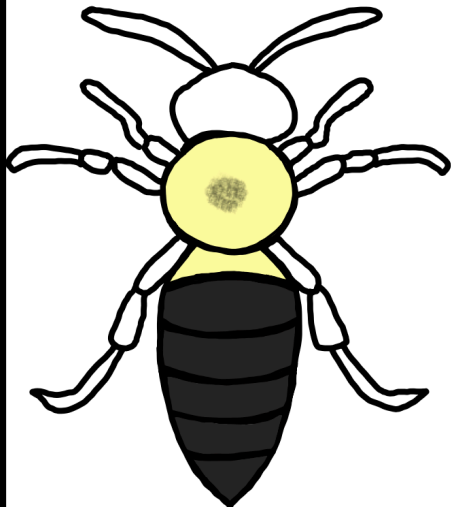
## **Bumble Bees of New Brunswick**

Bumble Bee is the common name for genus *Bombus*. In 2023, the bee project observed 7 species of *Bombus* in Sackville. Here is a guide so you can identify them in your backyard! Colour patterns can vary a bit within species; this guide depicts the most common patterns.

**Developed by the MTA Bee Team**

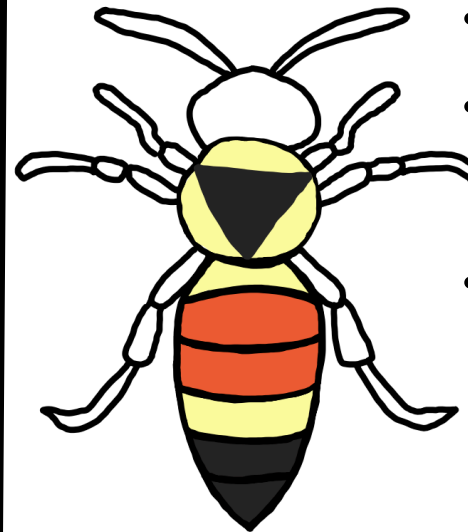
With funding by NBIF and NB Wildlife Trust Fund

### ***Bombus impatiens* (Common Eastern Bumble Bee)**



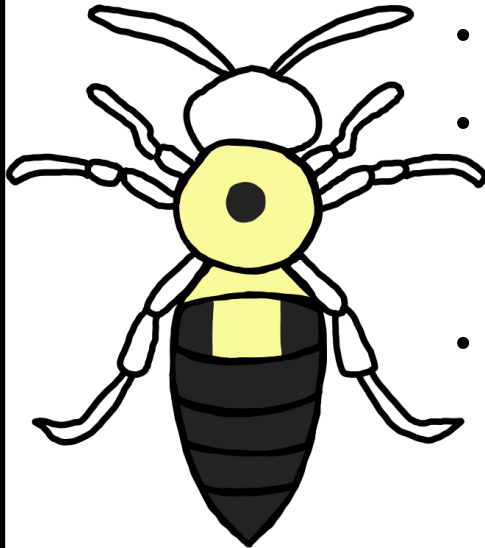
- Dusty smudge of black on the thorax.
- Only species here without any yellow on T2
- However, there are sometimes a few yellow hairs on T2.
- Yellow on T1 can appear concave in the middle
- Seen from April-October, peaks in September

### ***Bombus ternarius* (Tricoloured Bumble Bee)**



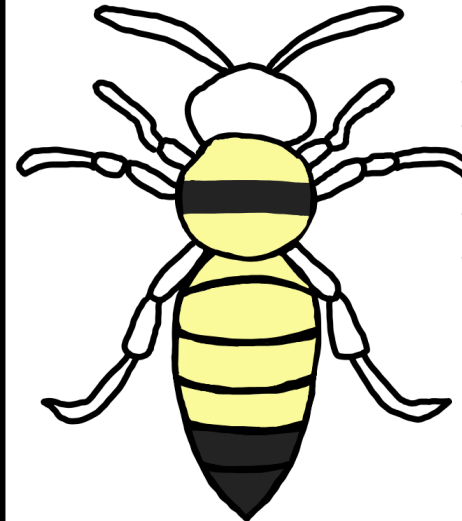
- Distinct black shield on the thorax
- Pattern of Yellow, Orange, Orange, Yellow, Black down the abdomen.
- Seen from April-October

***Bombus bimaculatus* (Two Spotted Bumble Bee)**



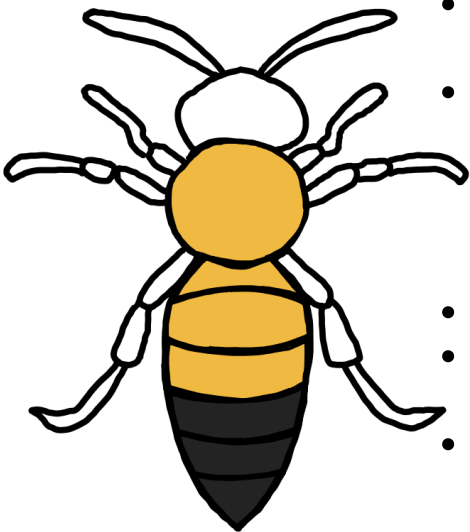
- Thorax has a very distinct black dot
- T2 always has some yellow in the middle, can range from a few hairs on the edge to a distinct square of yellow
- Seen from April-September, peaks in July

***Bombus borealis* (Northern Amber Bumble Bee)**



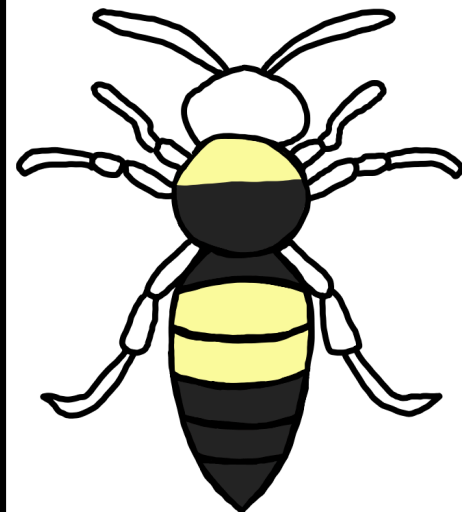
- Wide black bar on thorax between their wings.
- T1-T4 always yellow
- T5 can be yellow or black
- T6 is always black
- Seen from May-October, peaks in July

***Bombus perplexus* (Perplexing Bumble Bee)**



- Very little, if any, black on the thorax
- Hair is generally longer than other species, and is more of an egg yolk yellow than a pale yellow.
- T1-T3 are yellow
- T4-T6 predominantly black.
- Seen from May-August, peaks in July

***Bombus terricola* (Yellow Banded Bumble Bee)**



- Thorax is mostly black on the rear two-thirds.
- T1 and T4-T6 are black
- T2 and T3 are yellow
- Gives the distinct BYYBBB pattern on abdomen.
- Seen from April-September, peaks in July