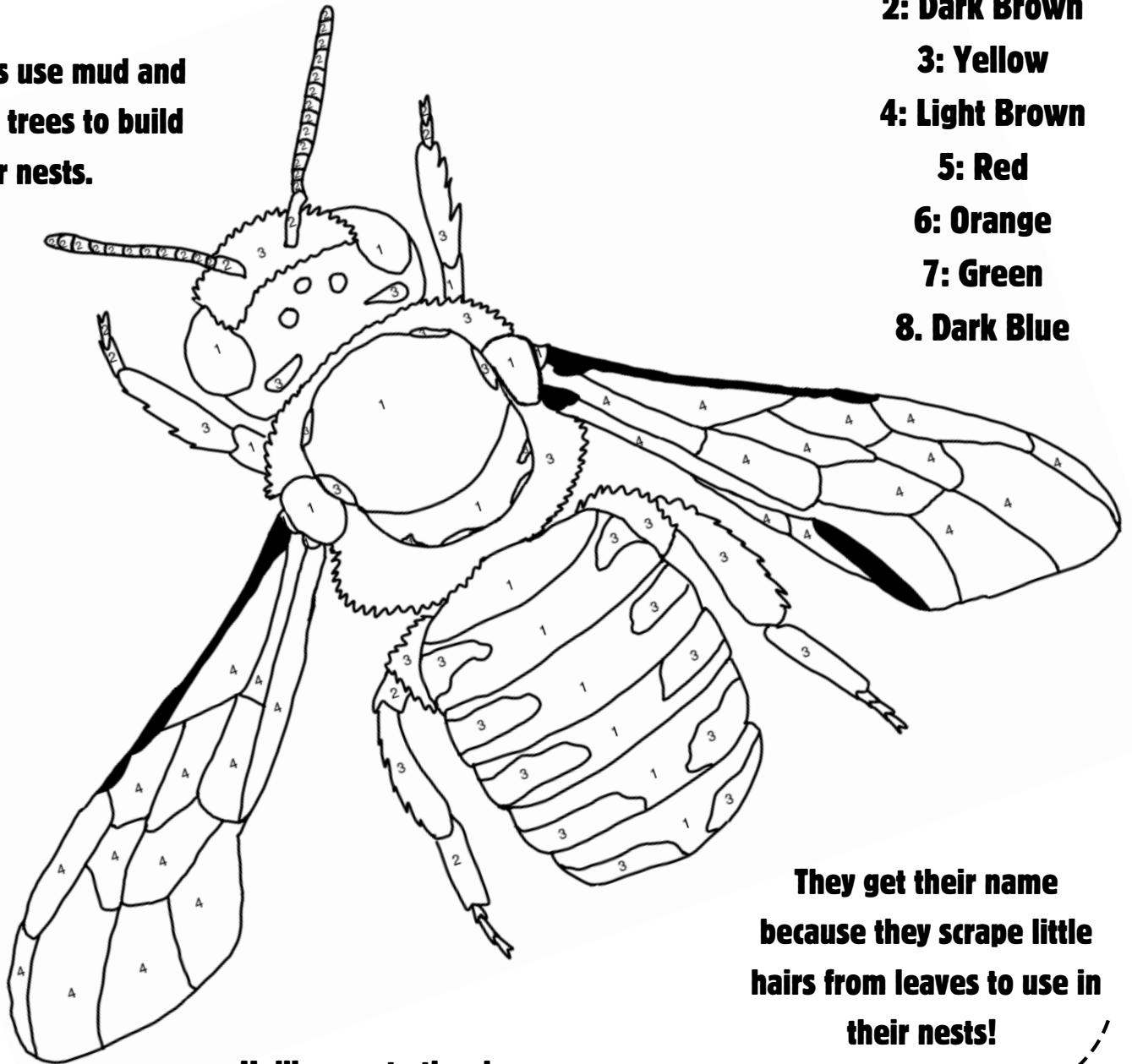




# Anthidium

## GARDNER BEE

**These bees use mud and resin from trees to build their nests.**



### **Colour Guide**

- 1: Black**
- 2: Dark Brown**
- 3: Yellow**
- 4: Light Brown**
- 5: Red**
- 6: Orange**
- 7: Green**
- 8. Dark Blue**

**They get their name because they scrape little hairs from leaves to use in their nests!**

**Unlike most other bee species, the males are larger than the females!**

